

Digital KVM Switch... KVM Control Via Web Browser



Dominion™ KX

Dominion KX Series

Enterprise-class digital KVM switch with integrated local and secure remote access.

Dominion KX116

- 16 KVM ports
- 1 user at the rack
- 1 remote user over the network

Dominion KX216

- 16 KVM ports
- 1 user at the rack
- 2 remote users over the network

Dominion KX232

- 32 KVM ports
- 1 user at the rack
- 2 remote users over the network

KVM Over IP When You Need It Most

Dominion KX is an enterprise-class, secure, digital KVM appliance that combines analog switching with one of the industry's highest-performing KVM Over IP (remote access) technology. At the rack, Dominion KX provides BIOS-level control of up to 32 servers and other IT devices from a single keyboard, monitor, and mouse. But unlike most other KVM solutions, Dominion KX features integrated remote access capabilities, providing the same BIOS-level control of your servers from anywhere in the world, via Web browser.

Engineered to deliver on all IT fronts, Dominion KX combines limitless access with bulletproof security, integrated hard power control, simple manageability, and the highest quality video available. And, it's all in a 1U form factor that may be deployed individually or integrated with any of Raritan's enterprise-wide solutions including CommandCenter™.

Architecture

Dominion KX consists of two components: the digital KVM switch and Computer Interface Modules (CIMs).

- ▶ Each CIM connects to the KVM ports of an individual server and delivers 'keep-alive' keyboard/mouse emulation ensuring that servers never hang. Plus, CIMs convert video signals for transmission over UTP (Cat5/5e/6) cabling.
- ▶ The Dominion KX switch connects to each CIM and provides KVM Over IP capabilities for remote access, as well as a local access port for controlling servers at the rack.
- ▶ Remote users easily access Dominion KX from any networked workstation via a standard Web browser.
- ▶ A true data center appliance, Dominion KX provides its entire feature set out-of-the-box: 128-bit encryption, remote power control, dual failover Ethernet, LDAP, RADIUS, and Active Directory integration.



Combines convenient access with bulletproof security

Flexible, Convenient, and Reliable

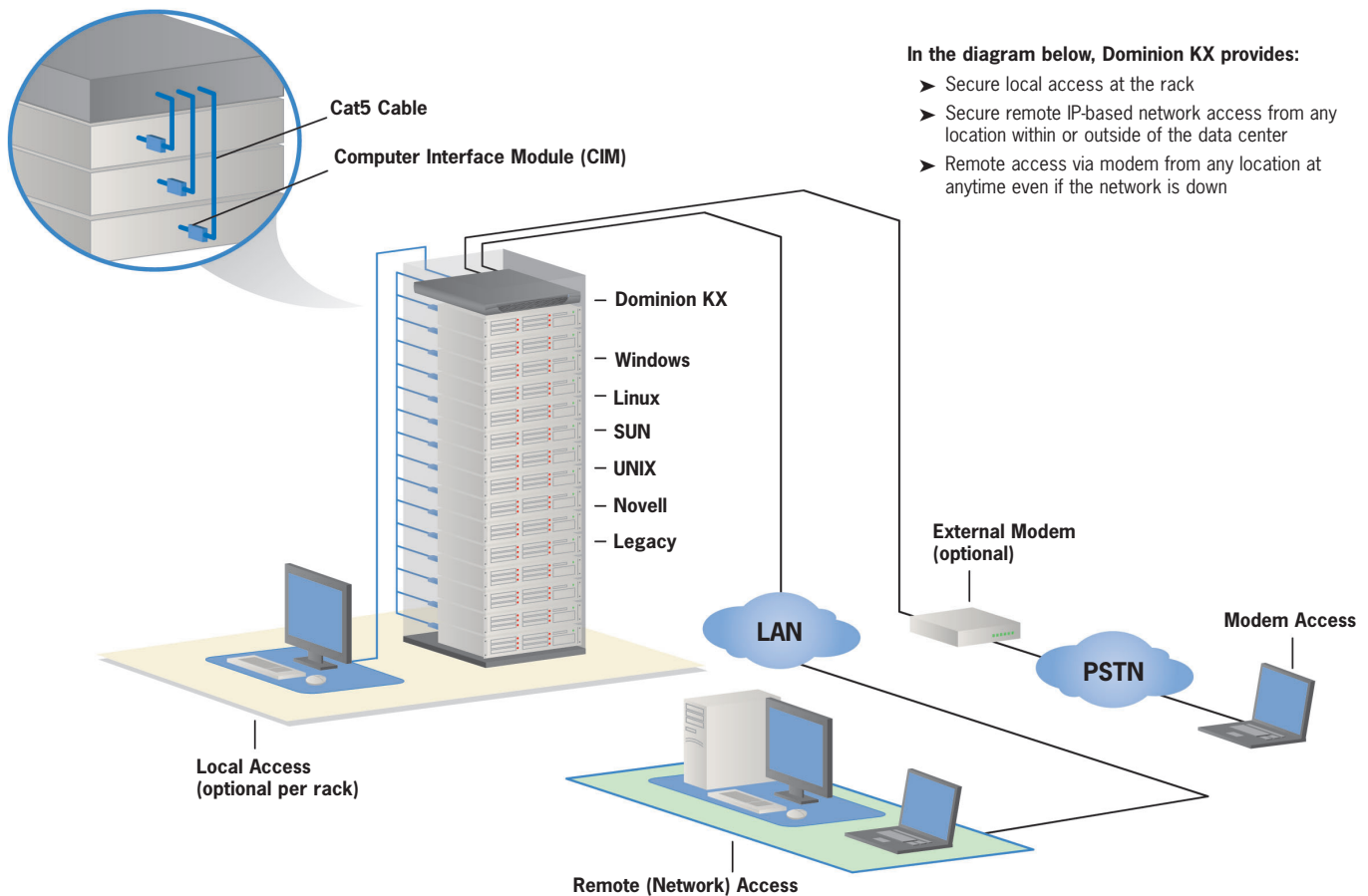
- Anytime, Anywhere - obtain BIOS-level access and hard power control of any server in your data center(s) via any networked workstation
- Convenient browser based access eliminates headache of installing client software
- Easy Installation - Plug and Play appliance, up and running in minutes
- Platform Independent - CIMs available for PS/2, Sun and USB
- Consolidates multiple KVM switches as a single integrated KVM network
- No reliance on any Windows® servers or IIS

Lowers Costs and Increases Productivity

- Reduces expensive down-time by providing network-independent access in emergencies
- Minimizes expensive and inconvenient travel to remote locations
- Eliminates need for multiple keyboards, monitors and mice - saving space and money

Secure

- SSL 128-bit RSA public key, 128-bit private key encryption
- All data - including video transmissions is encrypted



In the diagram below, Dominion KX provides:

- Secure local access at the rack
- Secure remote IP-based network access from any location within or outside of the data center
- Remote access via modem from any location at anytime even if the network is down

Enables higher uptime and improved productivity

- Centralized authentication with LDAP, RADIUS, or Active Directory support
- Local and remote access logged and authenticated
- Use of only one configurable TCP port to preserve strict firewall settings
- Customized user security profiles

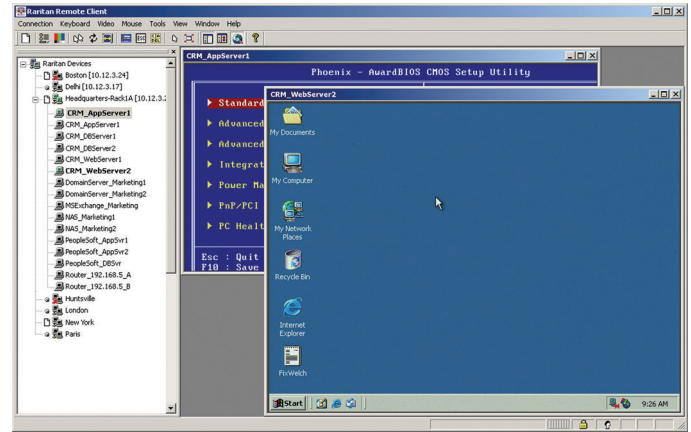
Easy to Scale

- Leverage LAN infrastructure with only one cable drop per rack
- Add, relocate and hot-swap components without disruption as your data center grows
- Deploy individually or integrate with any of Raritan's enterprise-wide data center solutions, including CommandCenter

Features

- 1U rack-mountable form factor
- Local user port for rack access
- Integrated power control
- UTP (Cat5/5e/6) cabling
- Highest port density in the industry
- Plug and Play installation
- Multi-platform CIMs for PS/2, Sun and USB devices
- Dual redundant Ethernet
- Flash firmware upgrades
- Integrated Web-based access and management

Access and Control at Anytime from Anywhere



Highest Quality KVM Over IP

- Intuitive Graphical User Interface (GUI)
- High color (15-bit+) palette support
- Adaptive video settings for different bandwidth situations
- Lowest bandwidth utilization
- Fastest, tightest 'mouse synchronization' in the industry
- Single sign-on and single interface for one consolidated view of all devices

When you're ready to take control, do it with Raritan's Dominion KX.

Distributed by:

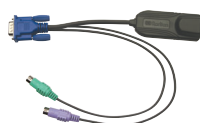
Raritan Computer, Inc., founded in 1985, is a leading provider of KVM (keyboard/video/mouse) and remote management solutions for access and control of servers and other network devices. With 19 consecutive years of profitable growth and technical innovation, Raritan makes products that are used to control millions of servers at more than 50,000 network data centers, computer test labs, and multi-workstation environments around the world. From the small business to the enterprise, Raritan's complete line of compatible and scalable KVM and remote connectivity products offers IT professionals the most reliable, flexible, and secure out-of-band solutions to manage data center equipment, while improving operational productivity.

Specs



Dominion KX Model	Description	Dimensions (WxDxH)	Weight	Power
KX116	16 server ports, 1 remote user, 1 local port for use at the rack	17.3" x 11.4" x 1.75" (439mm x 290mm x 44mm)	8.65 lbs (3.9kg)	100V/240V 50/60Hz 0.6A
KX216	16 server ports, 2 remote users, 1 local port for use at the rack	17.3" x 11.4" x 1.75" (439mm x 290mm x 44mm)	8.65 lbs (3.9kg)	100V/240V 50/60Hz 0.6A
KX232	32 server ports, 2 remote users, 1 local port for use at the rack	17.3" x 11.4" x 1.75" (439mm x 290mm x 44mm)	9.0 lbs (4.1kg)	100V/240V 50/60Hz 0.6A

Specifications For All Dominion KX Models	
Form Factor	1U full width, rack mountable (brackets included)
Operating Temperature Humidity	0° - 40°C (32° - 104°F) 20% - 85% RH
Remote Connection Network Modem Port Protocols	Dual Failover 10/100 Ethernet (RJ45) DB9(F) DTE TCP/IP, HTTP, HTTPS, UDP, RADIUS, LDAP(S), SNMP, DHCP, PAP, CHAP
Local Access Port Video Keyboard/Mouse	HD15(F) VGA Mini-DIN6(F) PS/2; or USB A (F)
Screen Resolutions PC text mode PC graphic mode Sun® video mode	720x400 640x480, 800x600, 1024x768, 1152x864, 1280x1024 1024x768, 1152x900, 1280x1024
Warranty	Two Years with Advanced Replacement*. In addition, Raritan offers a Guardian Extended Warranty.



Computer Interface Modules (CIMs)

CIM Model	Description	Dimensions (WxDxH)	Weight
DCIM-PS2	CIM for PS/2	1.3" x 3.0" x 0.6" (33mm x 76mm x 15mm)	0.20lb (0.09 kg)
DCIM-SUN	CIM for SUN	1.3" x 3.0" x 0.6" (33mm x 76mm x 15mm)	0.20lb (0.09 kg)
DCIM-USB	CIM for USB	1.3" x 3.0" x 0.6" (33mm x 76mm x 15mm)	0.20lb (0.09 kg)
DCIM-SUSB	CIM for SUN USB	1.3" x 3.0" x 0.6" (33mm x 76mm x 15mm)	0.20lb (0.09 kg)

*To qualify for advanced replacement under the standard warranty, you must register the product at http://www.raritan.com/standard_warranty. Raritan is a registered trademark of Raritan Computer, Inc. Dominion is a trademark of Raritan Computer, Inc. Windows is registered trademark of Microsoft Corporation. Sun is a registered trademark of Sun Microsystems, Inc.