

# Specs

## MasterConsole II

**MCC4**  
(1-User, 4-Channel)  
Dimensions 10.55" (W) x 9" (D) x 1.75" (H)  
268mm (W) x 225mm (D) x 44mm (H)  
Weight 4.5 lbs (2.0 kg)  
Power 115V/230V Auto Sensing 20 Watts



**MCC8**  
(1-User, 8-Channel)  
Dimensions 15.4" (W) x 9" (D) x 1.75" (H)  
390mm (W) x 225mm (D) x 44mm (H)  
Weight 6.1 lbs (2.8 kg)  
Power 115V/230V Auto Sensing 20 Watts



**MCC16**  
(1-User, 16-Channel)  
Dimensions 15.4" (W) x 9" (D) x 3.5" (H)  
390mm (W) x 225mm (D) x 88mm (H)  
Weight 8.4 lbs (3.8 kg)  
Power 115V/230V Auto Sensing 20 Watts



DC Powered Units  
**MCC8RD** (8-Channel) 48-Volt DC, Rack Mount (1U)  
**MCC16RD** (16-Channel) 48-Volt DC, Rack Mount (2U)

## MasterConsole SMX

**SMX18**  
(1-User, 8-Channel)  
Dimensions 17" (W) x 10.5" (D) x 1.75" (H)  
432mm (W) x 267mm (D) x 44mm (H)  
Weight 6.1 lbs (2.8 kg)  
Power 115V/230V Auto Sensing 20 Watts



**SMX28**  
(2-User, 8-Channel)  
Dimensions 17" (W) x 10.5" (D) x 1.75" (H)  
432mm (W) x 267mm (D) x 44mm (H)  
Weight 6.1 lbs (2.8 kg)  
Power 115V/230V Auto Sensing 20 Watts



## MasterConsole MXU2

**MXU28**  
(2-User, 8-Channel)  
Dimensions 15.37" (W) x 7.87" (D) x 1.72" (H)  
390mm (W) x 200mm (D) x 44mm (H)  
Weight 5.29 lbs (2.4 kg)  
Power 100V-240V Auto Sensing



**MXU216**  
(2-User, 16-Channel)  
Dimensions 15.37" (W) x 7.87" (D) x 3.47" (H)  
390mm (W) x 200mm (D) x 88mm (H)  
Weight 7.14 lbs (3.24 kg)  
Power 100V-240V Auto Sensing



**URKVMG**  
(Receiver)  
Dimensions 4.3" (W) x 3.6" (D) x 1.0" (H)  
108mm (W) x 91mm (D) x 23mm (H)  
Weight 0.5 lbs (0.2kg)  
Power 6V DC 1.4 amp output (included)  
User Port 6 pin k/b and mouse, HD15  
Connection to MXU2 RJ45 jack



## MasterConsole MX4

**MX48**  
(4-User, 8-Channel)  
Dimensions 17" (W) x 10.5" (D) x 1.75" (H)  
432mm (W) x 267mm (D) x 44mm (H)  
Weight 6.1 lbs (2.8 kg)  
Power 115V/230V Auto Sensing 20 Watts



**MX416**  
(4-User, 16-Channel)  
Dimensions 17" (W) x 10.5" (D) x 3.5" (H)  
432mm (W) x 267mm (D) x 88mm (H)  
Weight 8.4 lbs (3.8 kg)  
Power 115V/230V Auto Sensing 20 Watts



## Warranty

Standard Two Years with Advanced Replacement\*

# Take control of your servers with our simple yet full-featured KVM solution.

## MasterConsole™



**Single-user MasterConsole II**  
Models to support up to 4, 8, or 16 servers

**2-user MasterConsole SMX**  
Models to support up to 8 Sun servers

**2-user MasterConsole MXU2**  
Models to support up to 8 or 16 servers with built-in extended access

**4-user MasterConsole MX4**  
Models to support up to 8 or 16 servers

## Reclaim precious space and boost productivity.

If your small- to mid-size server room or data center is cluttered with control equipment, take back control of your space with a MasterConsole KVM switch.

This switch lets you eliminate costly, redundant equipment by giving 1 to 4 users centralized control from a single workstation. Individual models control up to 4, 8, or 16 servers, and switches can be cascaded to control up to 1,024 servers.

- ▶ Works with every leading server: PC, Sun®, Mac®, Alpha, RS/6000, HP/9000, SGI, and serially controlled devices; offers USB support, too.
- ▶ Compatible with any mix of computers running Windows NT, Windows 2000, Novell NetWare®, Solaris, UNIX, or Linux.
- ▶ Uses ultra-thin coax cables — almost as thin as Cat5 — that consume less space and allow easier cable management. Available in lengths of 2, 6.5, 13, 20, and 30 feet.

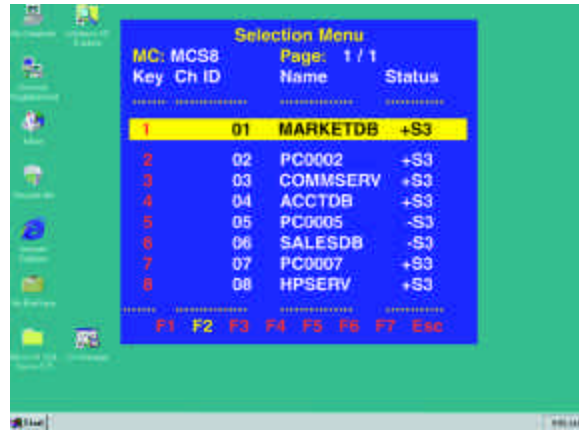
The bottom line? MasterConsole is the ideal solution for maintenance, administration, running GUI applications, troubleshooting, even rebooting your mission-critical servers.



**Raritan**  
When you're ready to take control.™

\*To qualify for advanced replacement under the standard warranty, you must register the product at [http://www.raritan.com/standard\\_warranty](http://www.raritan.com/standard_warranty). Raritan, Cat5 Reach, and Paragon are registered trademarks of Raritan Computer, Inc. MasterConsole is a trademark of Raritan Computer, Inc. Mac is a registered trademark of Apple Computer, Inc. Sun is a registered trademark of Sun Microsystems, Inc. Novell NetWare is a registered trademark of Novell.

## Count on Raritan for leading-edge technology and dependability in every MasterConsole KVM switch.



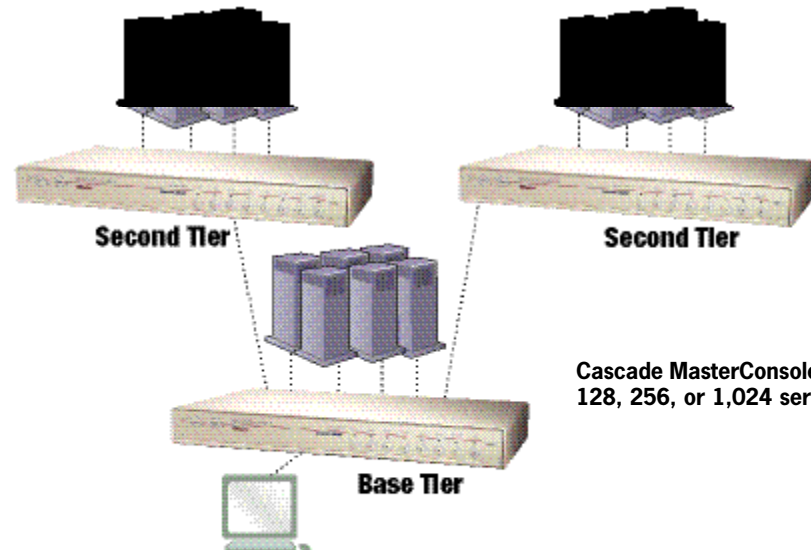
On Screen user interface makes server management easy.

### Bulletproof reliability and performance.

MasterConsole is engineered for dependability.

- ▶ Has a dedicated, intelligent processor at each port so each connected server “sees” its own keyboard and mouse, preventing lockup.
- ▶ Ensures nonstop server operation in case of power loss to the switch with Raritan’s unique “keep-alive” design.
- ▶ Supports high-resolution video up to 1600 x 1200.
- ▶ Offers an advanced on-screen interface.
- ▶ Ensures authorized access via password security.

### Two Tier Configuration



- ▶ Allows computer selection by name from pop-up, on-screen menus.
- ▶ Offers the best mouse synchronization, virtually eliminating latency, that annoying wait for key-strokes or mouse movements of the target server to “catch up” with your operations at the remote PC.
- ▶ Provides on-site, flash firmware upgrades.
- ▶ Maintains configuration data and tracks real-time user activity through a Windows program.
- ▶ Offers variable rate AutoScan.

MasterConsole is also available in a 48-Volt DC model for telco environments.

### Scales with your server room or data center.

MasterConsole accommodates today’s needs, as well as tomorrow’s.

- ▶ Control from 4 to 16 servers, allowing you to manage up to 1,024 servers by cascading units.
- ▶ Add a user up to 1,000 feet away with easy-to-manage Category 5 UTP cable and Raritan’s built-in Cat5 Reach® technology.
- ▶ Enable growth with Raritan’s award-winning, Cat5-based Paragon® KVM switch for enterprise-class server management.

## Choose the level of control you need from our full family of MasterConsole models.



MCC8

### MasterConsole II

- ▶ Lets a single user control up to 256 servers with cascaded units.
- ▶ Stores up to 6 user names and profiles.
- ▶ Offers 3 models to choose from:
  - MCC4 for up to 4 servers.
  - MCC8 for up to 8 servers.
  - MCC16 for up to 16 servers.



MXU28

### MasterConsole MXU2

- ▶ Lets 1 to 2 users control up to 128 servers with cascaded units.
- ▶ Includes built-in extended access capability via Cat5 cable up to 1,000 feet (with model URKVMG receiver at remote workstation).
- ▶ Stores up to 120 user names and profiles.
- ▶ Offers 2 models to choose from:
  - MXU28 for up to 8 servers.
  - MXU216 for up to 16 servers.



MX416

### MasterConsole MX4

- ▶ Lets 1 to 4 users control up to 1,024 servers with cascaded units.
- ▶ PublicView feature enables 2 or more users to share video.
- ▶ Stores up to 60 user names and profiles.
- ▶ Offers 2 models to choose from:
  - MX48 for up to 8 servers.
  - MX416 for up to 16 servers.



SMX18

### MasterConsole SMX

- ▶ Lets 1 to 2 users control up to 256 Sun servers with cascaded units.
- ▶ Handles management of Sun data centers, ISPs, and Web hosting facilities.
- ▶ Stores up to 60 user names and profiles.
- ▶ Offers 2 models to choose from:
  - SMX18 for 1 user and up to 8 Sun servers.
  - SMX28 for 2 users and up to 8 Sun servers.

Raritan Computer, Inc., founded in 1985, is the leading provider of KVM (keyboard/video/mouse) and remote management solutions for access and control of servers and other network devices. With 18 consecutive years of profitable growth and technical innovation, Raritan makes products that are used to control millions of servers at more than 35,000 network data centers, computer test labs, and multi-workstation environments around the world. From the small business to the enterprise, Raritan’s complete line of compatible and scalable KVM and remote connectivity products offers IT professionals the most reliable, flexible, and secure out-of-band solutions to manage data center equipment, while improving operational productivity.

**When you’re ready to take control, do it with Raritan’s MasterConsole.**

**Call 1-800-724-8090, or visit [www.raritan.com](http://www.raritan.com).**